



CERAMICHE ASCOT S.P.A.
VIA CROCE, 80
41014 SOLIGNANO (MO) ITALY
TEL +39 059 77.84.11
FAX +39 059 77.84.44/43
info@ascot.it
www.ascot.it

FOSSIL

ASCOT**BASIC**

ASCOTBASIC

Questo marchio contraddistingue i prodotti nati per rendere più accessibili lo stile, la tecnologia, l'esperienza Ascot. L'ineccepibile qualità tecnica dei materiali accompagna un'estetica che esprime eleganza e buon gusto.

This brand distinguishes the classic lines that afford entry into the wonderful world of Ascot at an accessible price. The impeccable technical quality of the products is accompanied by a visual appeal expressing elegance and good taste.

Cette marque caractérise les lignes d'empreinte classique qui permettent d'entrer dans le monde Ascot à des coûts compétitifs. La qualité technique incomparable des matériaux se marie à une beauté qui exprime élégance et goût.

Die Marke Ascot Basic steht für klassische Produktlinien, die zu wettbewerbsfähigen Preisen den Schritt in die Ascot-Welt ermöglichen. Die makellose technische Qualität der Werkstoffe geht einher mit einer Produktästhetik, die Eleganz und guten Geschmack kombiniert.



C E R A M I C H E



FOSSIL

PORCELLANATO
S M A L T A T O



FS020 Fossil Almond 33,3x33,3 13"x13" **550**



FS820 Fossil Almond 8x16,4 3 1/8"x6" **574**



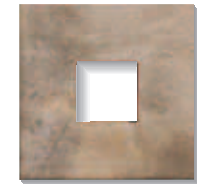
FS200 Fossil Almond 16,4x16,4 6"x6" **558**



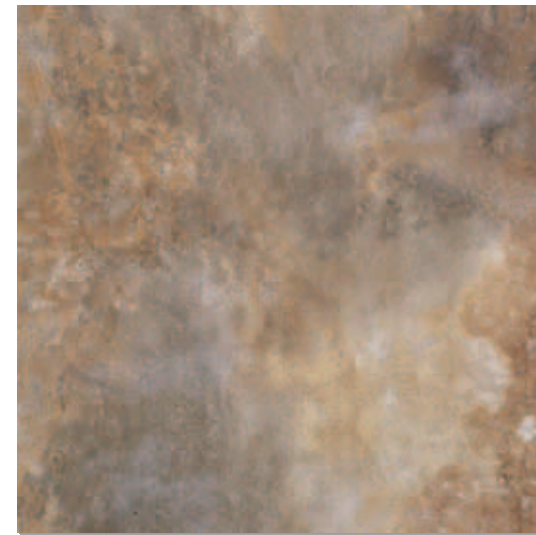
FSL20 Fossil Listello Almond 5,3x16,4 2"x6" **518**



FST20 Fossil Tozz Almond 5,3x5,3 2"x2" **518**



FSI20 Fossil Inserto Idro Almond 16,4x16,4 6"x6" **518**



FS520 Fossil Almond 50,2x50,2 20"x20" **558**

V2



FSX20 Fossil Almond Mix (tozz. 5,3x5,3) 33,3x33,3 13"x13" **530**

■ Materiale venduto al mq - Item sold by sqmt
Article vendu au m2 - Artikel per qm verkauft

■ Materiale venduto al pz - Item sold by piece
Article vendu a la piece - Artikel per stueck verkauft



FOSSIL

PORCELLANATO
S M A L T A T O



FS070 Fossil Brown 33,3x33,3 13"x13" **550**



FS870 Fossil Brown 8x16,4 31/8"x6" **574**



FS700 Fossil Brown 16,4x16,4 6"x6" **558**



FSL70 Fossil Listello Brown **518**
5,3x16,4 2"x6"



FST70 Fossil Tozz. Brown **518**
5,3x5,3 2"x2"

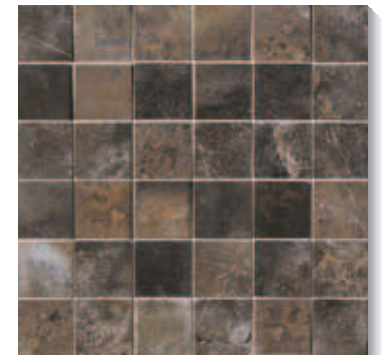


FS170 Fossil Inserto Idro Brown **518**
16,4x16,4 6"x6"



FS570 Fossil Brown 50,2x50,2 20"x20" **558**

V3



FSX70 Fossil Brown Mix (tozz. 5,3x5,3) 33,3x33,3 13"x13" **530**

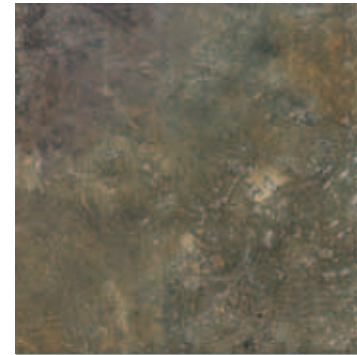
■ Materiale venduto al mq - Item sold by sqmt
Article vendu au m2 - Artikel per qm verkauft

■ Materiale venduto al pz - Item sold by piece
Article vendu a la piece - Artikel per stueck verkauft



FOSSIL

PORCELLANATO
S M A L T A T O



FS090 Fossil Green 33,3x33,3 13"x13" **550**



FS890 Fossil Green 8x16,4 31/8"x6" **574**



FS900 Fossil Green 16,4x16,4 6"x6" **558**



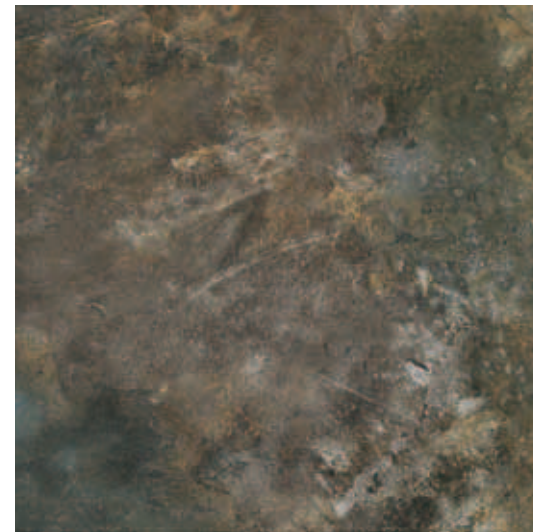
FSL90 Fossil Listello Green 518
5,3x16,4 2"x6"



FST90 Fossil 518
Tozz. Green 5,3x5,3
2"x2"

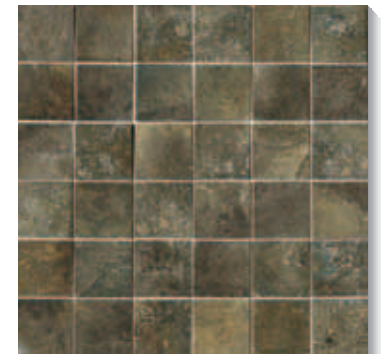


FSI90 Fossil Inserto Idro Green 518
16,4x16,4 6"x6"



FS590 Fossil Green 50,2x50,2 20"x20" **558**

V3



FSX90 Fossil Green Mix (tozz. 5,3x5,3) 33,3x33,3 13"x13" **530**

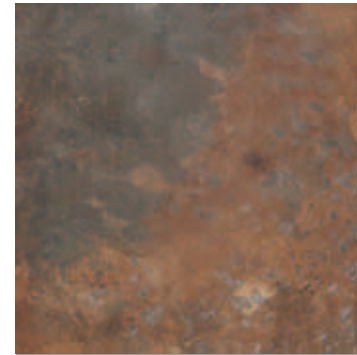
■ Materiale venduto al mq - Item sold by sqmt
Article vendu au m2 - Artikel per qm verkauft

■ Materiale venduto al pz - Item sold by piece
Article vendu a la piece - Artikel per stueck verkauft



FOSSIL

PORCELLANATO
S M A L T A T O



FS050 Fossil Red 33,3x33,3 13"x13" **550**



FS850 Fossil Red 8x16,4 3 1/8"x6" **574**



FS500 Fossil Red 16,4x16,4 6"x6" **558**



FSL50 Fossil Listello Red **518**
5,3x16,4 2"x6"



FST50 Fossil **518**
Tozz. Red 5,3x5,3
2"x2"

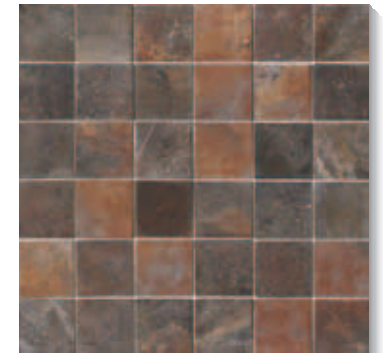


FS150 Fossil Inserto Idro Red **518**
16,4x16,4 6"x6"



FS550 Fossil Red 50,2x50,2 20"x20" **558**

V3



FSX50 Fossil Red Mix (tozz. 5,3x5,3) 33,3x33,3 13"x13" **530**

■ Materiale venduto al mq - Item sold by sqmt
Article vendu au m2 - Artikel per qm verkauft

■ Materiale venduto al pz - Item sold by piece
Article vendu a la piece - Artikel per stueck verkauft

FOSSIL



FSF20 Fossil Fascia Almond 5,3x33,3 2"x13" **529**



FSMX20 Fossil Almond Multi Mix 33,3x33,3 13"x13" **535**



- FSV20** V-Cap Almond 5x33,3 2"x13" **519**
- FSV50** V-Cap Red 5x33,3 2"x13" **519**
- FSV70** V-Cap Brown 5x33,3 2"x13" **519**
- FSV90** V-Cap Green 5x33,3 2"x13" **519**



- FSQR20** Quarter Round Almond 3x16,4 1,2"x6" **511**
- FSQR50** Quarter Round Red 3x16,4 1,2"x6" **511**
- FSQR70** Quarter Round Brown 3x16,4 1,2"x6" **511**
- FSQR90** Quarter Round Green 3x16,4 1,2"x6" **511**

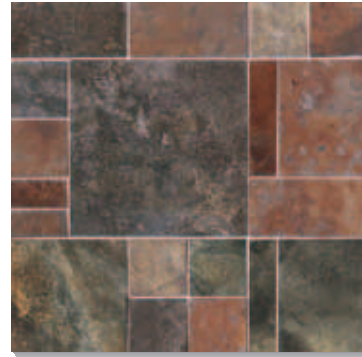
■ Materiale venduto al mq - Item sold by sqmt
Article vendu au m2 - Artikel per qm verkauft

■ Materiale venduto al pz - Item sold by piece
Article vendu a la piece - Artikel per stueck verkauft

PORCELLANATO S M A L T A T O



FSF00 Fossil Fascia Multicolor 5,3x33,3 2"x13" **529**



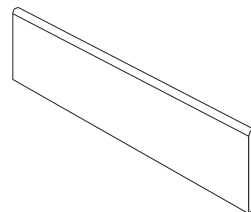
FSMX00 Fossil Multicolor Multi Mix 33,3x33,3 13"x13" **544**



- FSAV20** Ang. V-Cap Almond 5x2 2"x0,8" **530**
- FSAV50** Ang. V-Cap Red 5x2 2"x0,8" **530**
- FSAV70** Ang. V-Cap Brown 5x2 2"x0,8" **530**
- FSAV90** Ang. V-Cap Green 5x2 2"x0,8" **530**



- FSAQR20** Ang. Quarter Round Almond 2x2 0,8"x0,8" **515**
- FSAQR50** Ang. Quarter Round Red 2x2 0,8"x0,8" **515**
- FSAQR70** Ang. Quarter Round Brown 2x2 0,8"x0,8" **515**
- FSAQR90** Ang. Quarter Round Green 2x2 0,8"x0,8" **515**



- FSB20** Battiscopa Almond 8x33,3 3 1/8"x13" **505**
- FSB50** Battiscopa Red 8x33,3 3 1/8"x13" **505**
- FSB70** Battiscopa Brown 8x33,3 3 1/8"x13" **505**
- FSB90** Battiscopa Green 8x33,3 3 1/8"x13" **505**





Dati tecnici secondo norme:
 Technical data conform to:
 Caractéristiques techniques d'après normes:
 Technische Daten nach den Normen:

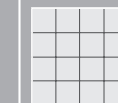
EN14411: 2003
 Appendice: G
 Gruppo BT a GL

Caratteristiche tecniche Technical data Caractéristiques techniques Technische Daten	Norme Norms Normes Norm	Valori ascot Value ascot Valeur ascot Wert ascot	Caratteristiche tecniche Technical data Caractéristiques techniques Technische Daten	Norme Norms Normes Norm	Valori ascot Value ascot Valeur ascot Wert ascot
Resistenza all'abrasione Abrasion resistance Résistance à l'abrasion Abstrationswiderstandigkeit	ISO 10545-7	PEI IV	Resistenza all'attacco acido e basico Glaze resistance to acid and alkaline attack Résistance aux acides et aux bases Säure- und laugenfestigkeit	ISO 10545-13	Resiste Resists Résiste Bestanding
Assorbimento d'acqua Water absorption Absorption d'eau Wasseraufnahme	ISO 10545-3	≤0,5 %	Resistenza alle macchie Stain resistance Résistance aux taches Fleckenfestigkeit	ISO 10545-14	Totale Complete Totale Absolut
Resistenza alla flessione Breaking modulus Résistance à la flexion Biegefestigkeit	ISO 10545-4	40±55 N/mm ²	Resistenza al gelo Resistance to frost Résistance au gel Frostbeständigkeit	ISO 10545-12	Non gelive Frost proof Ingefit Frostsicher
Durezza Mohs Mohs hardness Dureté Mohs Härte Mohs	UNI 101	6	Scivolosità Slipperiness Degré de glissement Rutschhemmung	DIN 51130	R10

IMBALLI - PACKING - VERPACKUNG - EMBALLAGE - EMBALAJE

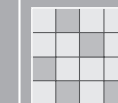
FORMATO	MQ./SCATOLA	PEZZI/SCATOLA	KG./SCATOLA	SCATOLE/PALLET	MQ./PALLET	KG./PALLET	SPESSORE
SIZE	SQM./BOX	PIECES/BOX	KG./BOX	BOXES/PALLET	SQM./PALLET	KG./PALLET	THICKNESS
FORMAT	QM./KARTON	STÜCK/KARTON	KG./KARTON	KARTONS/PALETTE	QM./PALETTE	KG./PALETTE	EPAISSEUR
FORMAT	M ² /BOÎTE	PIECES/BOÎTE	KG./BOÎTE	BOÎTE/PALETTE	M ² /PALETTE	KG./PALETTE	STÄRKE
FORMATO	MQ./CAJA	PIEZAS/CAJA	KG./CAJA	CAJA/PALLET	MQ./PALLET	KG./PALLET	ESPESOR
50,2x50,2 fondo	1,512	6	31,00	24	36,29	759	10 mm
33,3x33,3 fondo	1,332	12	25,50	42	55,94	1086	10 mm
16,4x16,4 fondo	1,183	44	23,20	55	65,07	1291	10 mm
8x16,4 fondo	1,169	88	22,00	55	64,30	1225	10 mm
33,3x33,3 mix	-	4	-	-	-	-	
5,3x33,3 fascia	-	6	-	-	-	-	
16,4x16,4 ins. idro	-	4	-	-	-	-	
5,3x5,3 tozzetto	-	4	-	-	-	-	
5,3x16,4 listello	-	6	-	-	-	-	
5x33,3 v-cap	-	6	-	-	-	-	
5x2 ang. v-cap	-	4	-	-	-	-	
3x16,4 quarter r.	-	15	-	-	-	-	
2x2 ang. quarter r.	-	4	-	-	-	-	
8x33,3 battiscopa	-	21	-	-	-	-	

GRADO DI STONALIZZAZIONE
 Amount of colour variation
 Degré de dénuancement
 Tonabweichungsstufe



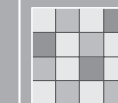
V1

BASSA STONALIZZAZIONE
 Low colour variation
 Faible dénuancement
 Geringe Tonabweichung



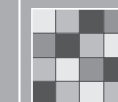
V2

MEDIA STONALIZZAZIONE
 Medium colour variation
 Dénuancement moyen
 Mittlere Tonabweichung



V3

ALTA STONALIZZAZIONE
 High colour variation
 Haut dénuancement
 Starke Tonabweichung



V4

MASSIMA STONALIZZAZIONE
 Maximum colour variation
 Dénuancement maximum
 Stärkste Tonabweichung